



DOUBLETREE SUITES by Hilton™

CHARLOTTE-SOUTHPARK



6300 Morrison Boulevard, Charlotte, North Carolina 28211
704.364.2400 Sales ~ 704.927.0056 Fax ~ 704.362.0203
www.charlottesouthparksuites.DoubleTree.com



CHECK-IN

Our official check-in time is 4:00pm.
A warm, signature DoubleTree chocolate chip cookie awaits you at check-in.

THE MARKET CAFE ~ RESTAURANT ~ seats 72

Breakfast
6:30am – 11:00am



Lunch
11:00am – 1:30pm

Dinner
5:00-10:00pm

BANKER'S CLUB LOUNGE ~ seating for 24

Sunday through Thursday
4:30pm – 11:00pm



Friday & Sunday
4:30pm – Midnight

Food served in Banker's Club until closing.



SUITE SERVICE ~ In-Room Dining

Daily from 6:39am to 11:00pm

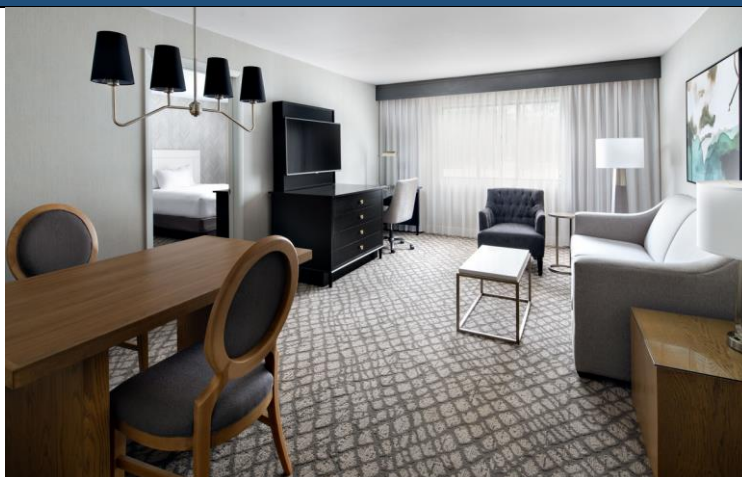
RELAX IN STYLE



Enjoy our beautifully landscaped Garden Courtyard featuring our large Outdoor Pool with cascading waterfall.

Outdoor Pool is open daily from 8:00am until 10:00pm in season.

YOUR SUITE



Each newly renovated guest suite is comprised of 700+ square feet and includes a large living room with sofa bed, separate bedroom with king size bed (or two queen beds) and bathroom, separate kitchenette including oven, full-size refrigerator, microwave, sink, dishwasher, utensils and dinnerware. For your sleep experience, we offer Sweet Dreams® by DoubleTree with plush-top mattress, luxurious linens, down comforter and jumbo pillows. Our bedding has outer hypo allergenic covers ~ our pillows, comforters and bed toppers are 100% Down.

HILTON HONORS®



Honors Members Earn Free Nights & Rewards.

FITNESS by PRECOR®



Open 24/7 with Suite Key ~ Located on Ground Floor

BUSINESS CENTER

Open 24/7 ~ Located Lobby Level

GIFT SHOP

Open 24/7 ~ Located behind Front Desk

ATM

Located in the Lobby

CALLS

- ☎ In order to dial from one suite to another, press 7 and the suite number.
- ☎ For outside access, press 9, then the number you wish to dial.

WAKE-UP CALL

If you want to have an automated wake-up call, please dial 550.

HIGH-SPEED INTERNET ACCESS

All of our suites and public areas are equipped with WiFi (Wireless High-Speed Internet Access).

COURTESY VAN

Our six-seater van can be available to drop you off at local addresses within a three~mile radius of the hotel. Arrangements need to be made via the Front Desk.

BELL SERVICE

Available if required.

CAR PARKING

Complimentary

ELEVATORS

Please note our hotel is divided by our Garden Courtyard into two wings. The elevators in the Lobby access floors 1 to 3. The elevators located on the Ground Floor at the back entrance to the hotel access ALL floors.

ICE / VENDING MACHINES

Ice machines are located on the first and third floors. Beverage vending machines are located on the ground floor, second floor and fourth floor. For additional ice, glasses and/or food service, please call Suite Service. Touch 105.

DRY CLEANING / ON SITE LAUNDRY FACILITIES

Dry Cleaning: Same-day service is available Monday through Saturday for items picked up by 8:30 a.m. Laundry bags and lists are located in your closet. All items will be returned to your suite the same evening by 7:00 p.m. Please drop off at the bell desk or call for pick-up. Touch 103. Self-Service Washers/Dryers are located on floors 3 & 4.

CARE LINE

If there is anything we may do to make your stay more comfortable, please contact the CARELINE for immediate attention. Touch 33.

CAR RENTAL



The car rental desk located on the ground level at the hotel at the side entrance off the Garden Courtyard.

NEAREST MALL



SOUTHPARK MALL ~ The Largest Shopping Center in the Carolinas

4400 Sharon Road ~ Entrance to the Mall via Macy's is only steps away from our back door.

Open Monday to Saturday 10:00am ~ 9:00pm, Sunday 12:30pm ~ 6:00pm

More stores, more festivities, more reasons to celebrate! As the Carolina's premier shopping destination, SouthPark offers an experience like no other...Their 100+ retail outlets include...



NEARBY SENSATIONAL SHOPPING



6610 Fairview Rd.
Charlotte North Carolina 28210
United States
8 am to 10 pm seven days a week
P: 980.213.2400

They are located at the corner of Fairview and Sharon roads in Charlotte's SouthPark neighborhood. Parking is available in front of the store and in their underground lot. Whether you're visiting to stock your pantry, relax at the Queen's Corner bar and tasting loft, attend a class at their Salud! Cooking School or check out one of their many other events planned every month, they look forward to serving you.



721 Governor Morrison Street ~ One Block from SouthPark Mall ~ 704-749-5042
Hours of Operation ~ Mon-Sat 7am-10pm; Sun 8am-9pm

Earth Fare, the leading natural & organic market, empowering people to make healthier choices for themselves, their communities and generations to come. The 25,000 square foot market is open for customers to enjoy many organic and natural offerings, including farm fresh fruits and vegetables, a wine shop with eclectic small vineyard selections, a gourmet cheese shop with over 250 varieties of European and American-Artisan cheeses, a full service meat and seafood department, on-site bakery and deli with ready-to-go-meal options, fully stocked grocery department with high end natural and organic grocery selections, and a nutrition and body care department featuring the highest quality supplements and personal care items.



WILLIAMS-SONOMA

Specialty Shops on the Park, 6401 Morrison Boulevard
Across the Street from the Hotel ~ 704-364-8886

Offering special events that can enhance your enjoyment of cooking and entertaining:

- ◆ Cooking classes that spotlight the latest culinary trends.
- ◆ Expert demonstrations of cookware as well as techniques and tips for cooking and entertaining.
- ◆ Personal appearances and signings by celebrated chefs and cookbook authors.



Phillips Place ~ Redefining the Art of Shopping

You will find outstanding restaurants, specialty retail, exciting apparel, and exquisite home furnishings, all set along an inviting main street against a backdrop of beautiful flowers, park benches, bubbling fountains, and Old World charm.

It's the destination for finding all the special things you need. Home of Restoration Hardware Room, Phillips Place is conveniently located in SouthPark at the intersection of Fairview Road and Cameron Valley Parkway, one-half mile west of SouthPark Mall and our Hotel.

SYMPHONY PARK



The hotel is adjacent to Symphony Park with its walking and jogging trails. During June, the Park is the venue for the Charlotte Symphony in the Park series of summer concerts.

TAXI

EXECUTIVE CAR SERVICE

704-525-2191 or the Front Desk will be happy to call on your behalf.

NEAREST HOSPITAL



CAROLINAS MEDICAL CENTER

Carolinas Medical Center (CMC) is the flagship facility of Carolinas HealthCare System.
1000 Blythe Boulevard ~ Emergency: 704-355-2171

WALK IN CLINIC



MORROCROFT URGENT CARE

4525 Cameron Valley Parkway ~ 704-512-6240
Seven Days A Week
8:00am ~ 8:00pm

No Appointment Necessary

MASSAGE, FACIALS, HAIR REMOVAL, MANICURES, PEDICURES



MODERN SALON & SPA

6908 Phillips Place Court
704.339.0909

"We define excellence by providing unparalleled personal care service
in an environment filled with a caring and dedicated team"

Above all else, Modern Salon & Spa was created as a place of well-being. By catering to the mind, body and soul, they have created a retreat from the everyday - a haven of pure relaxation. Modern Salon & Spa invites you to experience every aspect of our unique environment and the services they offer.

CHIROPRACTOR

Dr. Elizabeth Averick

6226 Fairview Road ~ 704-362-5400

NEAREST PHARMACY



6555 Morrison Boulevard, 704-366-4151

Store & Pharmacy Hours: OPEN 24 HOURS DAILY

NEAREST POST OFFICE

Woodlawn Road in Park Road Shopping Center ~ 704-275-8777
We will be happy to frank your mail and post charges to your room.

NEAREST GROCERY STORE



HARRIS TEETER

Morrocroft Village, 6701 Morrison Boulevard ~ 704-364-1245 ~ Open 24 Hours ~

Approx. 4 Blocks Away

Available at this supermarket location: Pharmacy, Wine, Florist, Starbucks, Western Union, ATM, Coinstar machine,
Blue Rhino Propane, RedBox

Nicknamed The "Taj Teeter" because of its size and its selection of food and wines from around the world.

NEAREST BOOKSTORE

BARNES & NOBLE

BOOKSELLERS

4020 Sharon Road ~ 704-364-0626 ~ Opposite Morrocroft Complex ~
Open Monday to Thursday 9:00am ~ 10:00pm, Friday – Saturday 9:00am ~ 11:00pm,
Sunday 9:00am ~ 9:00pm

NEAREST COFFEE SHOP



SouthPark Mall, 4400 Sharon Road ~ 704-365-7523 ~ The Mall is 3 steps away from our back door.

PIZZA DELIVERY



704-523-1669 ~ Sunday to Thursday 11:00am ~ 1:00am, Friday & Saturday 11:00am ~ 2:00am

CHINESE DELIVERY



704-543-8868 ~ Sunday to Thursday 11:00am ~ 10:00pm, Friday & Saturday 11:00am ~ 10:30pm

NEAREST 24 HOUR RESTAURANT



4544 South Boulevard
704.522.6522

Approximately 3.5 miles
*Family-style institution for old-school,
Southern breakfast fare plus gyros &
red-sauce plates.*

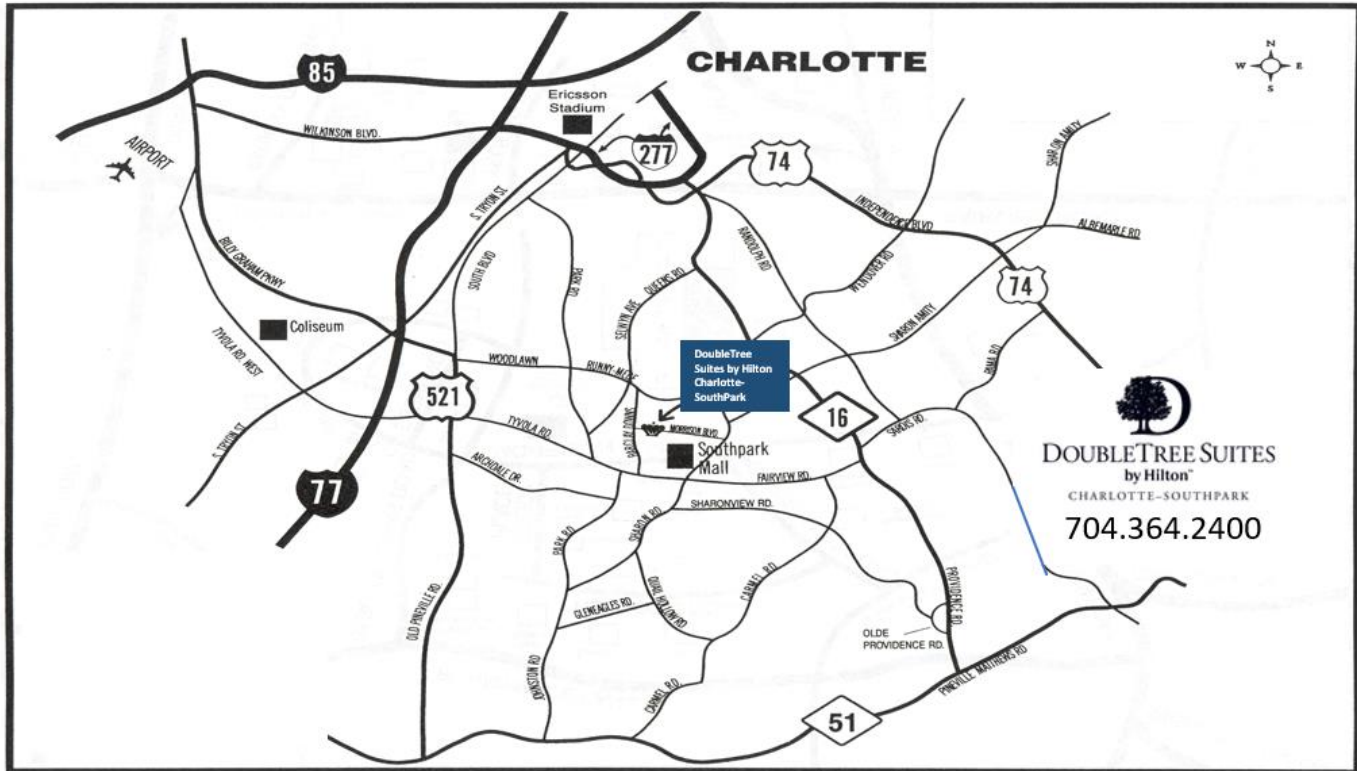


*Gourmet Deli, Bakery
and Prepared Foods*
Morrocroft Village, 6701 Morrison
Boulevard ~ 704-364-1245
Approx. 4 Blocks from Hotel



134 West Woodlawn Road
704-523-6350
*Serving a wide variety of
pancakes & other American
breakfast & diner fare.*

DIRECTIONS FROM THE AIRPORT AND INTERSTATES



You are in the airport:

Use the courtesy phone to dial 61 for Executive Car Service in baggage claim.
We are located in the heart of Charlotte's SouthPark area.
DoubleTree Suites by Hilton Charlotte-SouthPark

From the Airport:

- Take Billy Graham Parkway south
- Then take Coliseum Area/Tyvola Road (no exit number)
- Go 6.8 miles on Tyvola/Fairview and turn left onto Barclay Downs
- Go 0.3 miles to Morrison Blvd and take a right
- Entrance to DoubleTree Suites by Hilton Charlotte-SouthPark is on the right .

From I-85 traveling South:

- Take Exit for I-77 South
- Take Tyvola Road Exit #5
- Turn left at lights at top
- Go 4.8 miles on Tyvola/Fairview and turn left onto Barclay Downs
- Go 0.3 miles to Morrison Blvd and take a right
- Entrance to DoubleTree Suites by Hilton Charlotte-SouthPark is on the right

From I-77 traveling North or South:

- Tyvola Road Exit #5
- Turn right at lights if coming from I-77 North, turn left at lights if coming from I-77 South
- Go 4.8 miles on Tyvola/Fairview and turn left onto Barclay Downs
- Go 0.3 miles to Morrison Blvd and take a right
- Entrance to DoubleTree Suites by Hilton Charlotte-SouthPark is on the right.


RESTAURANTS IN THE NEIGHBORHOOD



SouthPark Mall
704-770-0076

MAGGIANO'S
LITTLE ITALY®
SouthPark Mall, 704-916-2300

MCCORMICK & SCHMICK'S
SEAFOOD RESTAURANTS
4335 Barclay Downs Drive, 704-442-5522
THE Seafood Restaurant

THE COWFISH
SUSHI • BURGER • BAR 
4310 Sharon Road ~ 704-365-1922
at SouthPark Mall, near Crate and Barrel



california
PIZZA KITCHEN
SouthPark Mall
4400 Sharon Road
704-364-6280



BULLA
CASTROBAR
The Village at SouthPark
310 Sharon Rd
704.837.4422



EST. 1928 CHARLOTTE, NC
REID'S
FINE FOODS
4331 Barclay Downs Drive
704.377.7686



SPG
est. 2017
SOUTHPARK GRILL
Capital Towers
4300 Congress Street
704-900-6954



PINK CACTUS
bar + kitchen
4423 Sharon Road, 980-207-0949



P.F. CHANG'S
CHINA BISTRO™
6809-F Phillips Place Court, 704-552-6644



DOGWOOD
SOUTHERN TABLE & BAR
4905 Ashley Park Lane
704-910-4919



131 MAIN
RESTAURANT
5970 Fairview Road
704-343.0131



Del Frisco's
4725 Piedmont Row Dr.
704-552-5502



TOSCANA
ITALIAN RESTAURANT & PIZZERIA
6401 Morrison Blvd.
704-367-1808



BRICKTOP'S
Specialty Shops on the Park, 6401 Morrison Blvd.,
Suite 1B, 704-364-6255



Bar Marcel
3930 Sharon Rd Suite 160
980=237-1919



Panera
BREAD®
5940 Fairview Road
(980) 365-7999



PEPPERVINE
4820 Piedmont Row Dr.
Suite 170B
7042832-2333



PACO'S TACOS
Specialty Shops on the Park, 6401 Morrison Blvd.
704-716-8226



BRIO
tuscan grille
4620 Piedmont Row Dr.
Suite 110, 980.219.7410





VILLAGE TAVERN®
Scratch Kitchen • Craft Bar™

Rotunda Building, Barclay Downs
704-552-9983
Casual dining with large terrace
for outdoor seating

RESTAURANTS IN THE NEIGHBORHOOD

 RUTH'S CHRIS STEAK HOUSE 6000 Fairview Road 704-556-1115	 rooster's WOOD-FIRED KITCHEN 6601 Morrison Blvd. 704-366-8688	 ZOË'S KITCHEN 6100 Fairview Road #100, 704.237-8908	 AMERICAN BURGER CO. 5821 Fairview Road 704-733-9037
--	---	--	---

 BARRINGTON'S <i>~ Southern Seasons. Northeastern influence. ~</i> 7822 Fairview Road, 704-364-5755 <i>Fine Dining</i>	 upstream 6902 Phillips Place Court, 704-556-7730 <i>Seafood including Sushi Bar</i>
--	--

 THE ORIGINAL PANCAKE HOUSE 4736 Sharon Road 704-553-8364	 CAFE MONTE FRENCH BAKERY & BISTRO 6700 Fairview Rd 704- 552-1116
--	--

~ TAKE-OUT NEARBY ~

 CAPI SHE REAL ITALIAN KITCHEN 6555 Morrison Blvd. 980-272-9701	 Wendy's 6555 Morrison Blvd. 980-219-8837	 McDonald's 6428 Fairview Rd. 704-362-0676	
 Harris Teeter Your Neighborhood Food Market Morrocroft Village 6701 Morrison Boulevard 704-364-1245 Approx. 4 Blocks from Hotel	Available at this supermarket location 24 HOURS Gourmet Deli, Imported & Domestic Beer and Wine, Bakery and Prepared Foods. There's a great selection of food, beers and wines from around the world.		

~ DINE-IN OR TAKE-OUT OPTIONS AT THE FOOD COURT IN SOUTHPARK MALL LOCATED NEXT DOOR TO THE HOTEL INCLUDE ~





CHARLOTTE.

LOCAL ATTRACTIONS

So many things to do, so little time...Isn't that always the way it goes? The attractions in Charlotte ~ The Queen City ~ are no exception.



The Mint Museum Experience Art

